



# Preparing for the Future

- Contract Manufacturing
- Custom Product Development
- Formulation and Design

**Product Catalogue**



1 Index  
2 About Us  
3 History  
4 Production  
5 R&D  
6-23 Argivit® Products  
24-26 Betamega® Products  
27 Ageflor® Products  
28 Fullomega® Products  
29 Preflat® - Tetrazinc® Products  
30-33 Prosante® Products  
34 Doctor Do  
35 Certificates

# Dietary Supplements of the World



**Argivit®** **Ageflor®** **Betamega®**

**Fullomega®** **Tetrazinc®** **Preflat®**  **Prosante®**



## About Us

Hekim® Pharmaceuticals started its health journey in 2012. Having OTC products in its product range, the company continues its R&D studies and investments, which it attaches great importance to, without slowing down.

To become a leading and international brand in the Turkish pharmaceutical industry; We work passionately to improve the lives and the world we touch, with our innovative products and services, and our bold and pioneering initiatives. We believe that to carry out all our activities, business processes and relations within the framework of ethical rules, our understanding of quality exists not only in what we produce, but also in the culture of the management, employees and the company as a whole. We aim to contribute to human health by making quality a lifestyle, continuing its activities with the awareness of respect for the environment, open to change, reliable, prioritizing customer satisfaction and medical ethics.



*We do our job with Love*

**Founded**

CEO and Founder  
Murat Doğan Dr.  
in 2012 established

**2012**

**Branding**

With 5 New Brands  
It entered the market

**2015**

**Leader**

In Turkey  
9 out of 10 families  
chose Argivit brand

**2018**

**Growth**

Our own production facility  
and we built our factory

**2021**

**Result**

In 11 countries,  
At 27258 sales points  
exists

**2023**



## CREATE THE HEALTH PRODUCTS YOU WANT

Hekim® Pharmaceuticals is a contract manufacturing center in Turkey. Wherever you are, our experts develop cosmetics and nutritional supplements of your choice under your name. Hekim® Pharmaceuticals marketing team predicts future trends while examining your project. We ensure optimal scientific monitoring of raw materials and active ingredients.

## SPECIAL PRODUCT DEVELOPMENT FOR THE HEALTH SECTOR

The healthcare industry is highly competitive and innovation is important. At Hekim® Pharmaceuticals, we are always excited to help you develop a new product to achieve your goal. Every project is a collaborative effort to find the best solution for your brand or identity. We review every aspect of your marketing brief to create and supply the health products you are looking for. We consider your strategy, brand image, timeline and economic constraints to help you make the right choices.

## DETERMINING THE BUSINESS IDEA

Custom healthcare products for your target market Your target audience is the key to your success: Your new healthcare product must meet expectations to stand a chance of success. When creating product features, the habits and culture of your target market are a determining factor. Hekim® Pharmaceuticals even takes into account your distribution network, as it can affect the packaging design and size.



**Innovation is our core business:** Being a pioneer in our field is our goal. Hekim<sup>®</sup> Pharmaceuticals Laboratory always continues its ongoing R&D studies alongside technology, as evidenced by the diversity of our product range: from cosmetic products to dietary supplements and hair care perfumes.

A window into nature: For more than 10 years, Hekim<sup>®</sup> Pharmaceuticals marries nature and strategy.

Nature concentrates on the enormous wealth that Hekim<sup>®</sup> Pharmaceuticals Laboratory works to reveal with its product formulations. Our functional ingredient blends exemplify Hekim Pharmaceuticals Laboratory's pioneering approach to finding the best agents wherever they are located. Natural cosmetologists, we create quality and personalized products that respect the environment.

Our team of experts keeps up with the latest healthcare innovations by providing ongoing competitive intelligence in raw materials and tissues. Members of our R&D team, who are true experts in dermo-cosmetics formulation, take a proactive stance and will recommend formulas to suit your needs. In practical terms, this means:

- Raw material research • Formulation development • Physico-chemical characterization of the most active substances and components
- Enforcement of regulatory compliance of ingredients, activities and formulations in export markets • Traceability at every stage of the production process
- Industrial production transfer in cooperation with manufacturing teams • Implementation of efficacy tests in accordance with authoritative claims
- Interpretation of tests and study results (stability, efficacy, tolerability, microbiology, etc.)

We believe the effectiveness of formulations must be proven before making any claims. We develop for you turnkey effective and innovative cosmetic formulations with scientifically proven actions. Tell us your specifications and constraints and we'll make a unique offer for your brand.



# Argivit<sup>®</sup>

## *Keep Moving Forward.*

### Be The Best



[www.  
argivit  
.com](http://www.argivit.com)





## CLASSIC 150 ml

- L-ARGININE
  - MULTIVITAMINS
  - MULTIMINERALS
- CONTAINING LIQUID  
FOOD SUPPLEMENT**

### Argivit<sup>®</sup> CLASSIC

It is suitable for children aged 4-10 years, adults aged 11 and over.

| Active Ingredients | In 5 ml (1 scale)      | NRV%  | In 10 ml (2 scale)    | NRV%   |
|--------------------|------------------------|-------|-----------------------|--------|
| L-Arginine         | 250 mg                 | -     | 500 mg                | -      |
| Vitamin C          | 70 mg (1400,00 IU)     | 87,5  | 140 mg (2800,00 IU)   | 175    |
| Vitamin B3         | 10 mg NE               | 62,5  | 20 mg NE              | 125    |
| Zinc               | 5 mg                   | 50    | 10 mg                 | 100    |
| Vitamin B5         | 4 mg                   | 66,67 | 8 mg                  | 133,34 |
| Vitamin B1         | 1 mg (333,33 IU)       | 90,9  | 2 mg (666,66 IU)      | 181,8  |
| Vitamin E          | 0,95 mg α-TE (1,29 IU) | 7,92  | 1,9 mg α-TE (2,58 IU) | 15,84  |
| Vitamin B2         | 0,9 mg                 | 64,28 | 1,8 mg                | 128,56 |
| Manganese          | 0,85 mg                | 42,5  | 1,7 mg                | 85     |
| Vitamin B6         | 0,5 mg                 | 35,71 | 1 mg                  | 71,42  |
| Vitamin A          | 240 µg RE (436,32 IU)  | 30    | 480 µg RE (872,64 IU) | 60     |
| Folic Acid         | 150 µg                 | 75    | 300 µg                | 150    |
| Iodine             | 70 µg                  | 46,67 | 140 µg                | 93,34  |
| Chromium           | 60 µg                  | 150   | 120 µg                | 300    |
| Selenium           | 50 µg                  | 90,9  | 100 µg                | 181,8  |
| Molybdenum         | 35 µg                  | 70    | 70 µg                 | 140    |
| Biotin             | 15 µg                  | 30    | 30 µg                 | 60     |
| Vitamin D          | 10 µg (400,00 IU)      | 200   | 20 µg (800,00 IU)     | 400    |
| Vitamin B12        | 1,5 µg                 | 60    | 3 µg                  | 120    |

NRV: Nutritional Reference Value.

-: There is no Nutritional Reference Value.



Natural Orange and  
Vanillin Flavored



**Usage:** It is recommended to consume 5 ml (1 scoop) once a day as a food supplement for children aged 4-10, and 10 ml (2 scoops) once a day as a food supplement for adults aged 11 and over. Shake before use. Do not exceed the recommended daily serving.

**Indication:** It contributes to healthy growth and development. It can help to support increase stature in idiopathic short stature.

## CLASSIC 30 Tablets

- PHOSPHOTIDYLSERINE
- GINKGO BILOBA
- GREEN TEA
- ST. JOHN'S WORT
- RESVERATROL
- L-ARGININE
- MULTIVITAMIN
- MULTIMINERAL

**CONTAINING  
FOOD SUPPLEMENT**

### Argivit<sup>®</sup> CLASSIC TABLET

| Active Ingredients      | Amount in 1 Tablet    | NRV%   |
|-------------------------|-----------------------|--------|
| L-Arginine              | 125 mg                | -      |
| Calcium                 | 120 mg                | 15     |
| Ginkgo biloba           | 60 mg                 | -      |
| Magnesium               | 56,5 mg               | 15     |
| Vitamin C               | 40 mg (800,00 IU)     | 50     |
| Phosphotidylserine      | 25 mg                 | -      |
| Green Tea Extract       | 25 mg                 | -      |
| St. John's Wort Extract | 25 mg                 | -      |
| Resveratrol             | 10 mg                 | -      |
| Vitamin B3              | 8,05 mg NE            | 50,31  |
| Zinc                    | 7,5 mg                | 75     |
| Vitamin E               | 5 mg α-TE (10,9 IU)   | 41,66  |
| Vitamin B5              | 3 mg                  | 50     |
| Vitamin B6              | 2,5 mg                | 178,57 |
| Vitamin B2              | 2 mg                  | 142,85 |
| Vitamin B1              | 1,75 mg (583,33 IU)   | 159,09 |
| Manganese               | 0,5 mg                | 25     |
| Copper                  | 500 µg                | 50     |
| Vitamin A               | 300 µg RE (545,40 IU) | 37,5   |
| Iodine                  | 150 µg                | 100    |
| Folic Acid              | 100 µg                | 50     |
| Biotin                  | 50 µg                 | 100    |
| Selenium                | 37,5 µg               | 68,18  |
| Chromium                | 12,5 µg               | 31,25  |
| Molybdenum              | 7,5 µg                | 15     |
| Vitamin D               | 2,5 µg (100,00 IU)    | 50     |
| Vitamin B12             | 1,5 µg                | 60     |

NRV: Nutritional Reference Value.

-: There is no Nutritional Reference Value.



**Usage:** It is recommended to take 1 tablet once a day for adults over 11 years of age.

**Indication:** It strengthens immunity against diseases helps to stay physically and mentally fit, stay in shape and helps to lose weight by reducing fat absorption in the diet.

REINFORCED  
FORMULA



CLASSIC  
FORMULA

Argivit<sup>®</sup>

## FOCUS 150 ml

- PHOSPHOTIDYLSERINE
  - L-ARGININE
  - MULTIVITAMINS
  - MULTIMINERALS
- CONTAINING LIQUID  
FOOD SUPPLEMENT**



**Natural Orange and  
Vanillin Flavored**

### Argivit<sup>®</sup> FOCUS

It is suitable for children aged 4-10 years, adults aged 11 and over.

| Active Ingredients | In 5 ml (1 scale)      | NRV%  | In 10 ml (2 scale)    | NRV%   |
|--------------------|------------------------|-------|-----------------------|--------|
| L-Arginine         | 250 mg                 | -     | 500 mg                | -      |
| Vitamin C          | 70 mg (1400,00 IU)     | 87,5  | 140 mg (2800,00 IU)   | 175    |
| Phosphotidylserine | 10 mg                  | -     | 20 mg                 | -      |
| Vitamin B3         | 10 mg NE               | 62,5  | 20 mg NE              | 125    |
| Zinc               | 5 mg                   | 50    | 10 mg                 | 100    |
| Vitamin B5         | 4 mg                   | 66,67 | 8 mg                  | 133,34 |
| Vitamin B1         | 1 mg (333,33 IU)       | 90,91 | 2 mg (666,66 IU)      | 181,82 |
| Vitamin E          | 0,95 mg α-TE (1,29 IU) | 7,92  | 1,9 mg α-TE (2,58 IU) | 15,84  |
| Vitamin B2         | 0,9 mg                 | 64,29 | 1,8 mg                | 128,58 |
| Manganese          | 0,85 mg                | 42,5  | 1,7 mg                | 85     |
| Vitamin B6         | 0,50 mg                | 35,71 | 1 mg                  | 71,42  |
| Vitamin A          | 240 µg RE (436,32 IU)  | 30    | 480 µg RE (872,64 IU) | 60     |
| Folic Acid         | 150 µg                 | 75    | 300 µg                | 150    |
| Iodine             | 70 µg                  | 46,67 | 140 µg                | 93,34  |
| Chromium           | 60 µg                  | 150   | 120 µg                | 300    |
| Selenium           | 50 µg                  | 90,91 | 100 µg                | 181,82 |
| Molybdenum         | 35 µg                  | 70    | 70 µg                 | 140    |
| Biotin             | 15 µg                  | 30    | 30 µg                 | 60     |
| Vitamin D          | 10 µg (400,00 IU)      | 200   | 20 µg (800,00 IU)     | 400    |
| Vitamin B12        | 1,5 µg                 | 60    | 3 µg                  | 120    |

NRV: Nutritional Reference Value.

-: There is no Nutritional Reference Value.

**Usage:** It is recommended to consume 5 ml (1 scoop) once a day as a food supplement for children aged 4-10, and 10 ml (2 scoops) once a day as a food supplement for adults aged 11 and over. Shake before use. Do not exceed the recommended daily serving.

**Indication:** It contributes to healthy growth and development, support for school success, focus, intelligence development and mental clarity.

## FOCUS 30 Tablets

- PHOSPHOTIDYLSERINE
  - L-ARGININE
  - MULTIVITAMINS
  - MULTIMINERALS
- CONTAINING  
FOOD SUPPLEMENT**

### Argivit<sup>®</sup> FOCUS TABLET

| Active Ingredients | Amount in 1 Tablet   | NRV%   |
|--------------------|----------------------|--------|
| L-Arginine         | 500 mg               | -      |
| Vitamin C          | 140 mg (2800 IU)     | 175    |
| Phosphotidylserine | 100 mg               | -      |
| Zinc               | 10 mg                | 100    |
| Vitamin B3         | 10 mg NE             | 62,5   |
| Vitamin B5         | 5 mg                 | 83,33  |
| Iron               | 5 mg                 | 35,71  |
| Vitamin E          | 1,8 mg α-TE (3,9 IU) | 15     |
| Manganese          | 1 mg                 | 50     |
| Vitamin B1         | 1 mg (333 IU)        | 90,91  |
| Vitamin B6         | 1 mg                 | 71,43  |
| Vitamin A          | 500 µg RE (1660 IU)  | 62,5   |
| Folic Acid         | 300 µg               | 150    |
| Vitamin B2         | 0,21 mg              | 15     |
| Chromium           | 100 µg               | 250    |
| Selenium           | 100 µg               | 181,82 |
| Molybdenum         | 100 µg               | 200    |
| Iodine             | 75 µg                | 50     |
| Biotin             | 30 µg                | 60     |
| Vitamin D3         | 20 µg (800 IU)       | 400    |
| Vitamin B12        | 1,5 µg               | 60     |

NRV: Nutritional Reference Value.

-: There is no Nutritional Reference Value.



**Usage:** It is recommended to take 1 tablet once a day for adults over 11 years of age.

**Indication:** It contributes to support focus and mental clarity, immunity against diseases helps to stay physically and mentally fit. It helps improve athletic performance.

# FOCUS ON THE FUTURE

# Argivit<sup>®</sup>

## SMART 150 ml

- CHOLINE
  - L-CARNITINE
  - PHOSPHOTIDYLSERINE
  - L-ARGININE
  - MULTIVITAMINS
  - MULTIMINERALS
- CONTAINING LIQUID  
FOOD SUPPLEMENT**

### Argivit<sup>®</sup> SMART

It is suitable for children aged 4-10 years, adults aged 11 and over.

| Active Ingredients | In 5 ml (1 scale)      | NRV%  | In 10 ml (2 scale)    | NRV%   |
|--------------------|------------------------|-------|-----------------------|--------|
| L-Arginine         | 250 mg                 | -     | 500 mg                | -      |
| Choline            | 100 mg                 | -     | 200 mg                | -      |
| L-Carnitine        | 100 mg                 | -     | 200 mg                | -      |
| Phosphotidylserine | 100 mg                 | -     | 200 mg                | -      |
| Vitamin C          | 70 mg (1400,00 IU)     | 87,5  | 140 mg (2800,00 IU)   | 175    |
| Vitamin B3         | 10 mg NE               | 62,5  | 20 mg NE              | 124,6  |
| Zinc               | 5 mg                   | 50    | 10 mg                 | 100    |
| Vitamin B5         | 4 mg                   | 66,67 | 8 mg                  | 133,34 |
| Iron               | 2,2 mg                 | 15,71 | 4,4 mg                | 31,42  |
| Vitamin B1         | 1 mg (333 IU)          | 90,9  | 2 mg (666 IU)         | 181,8  |
| Vitamin E          | 0,95 mg α-TE (2,06 IU) | 7,92  | 1,9 mg α-TE (4,12 IU) | 15,84  |
| Vitamin B2         | 0,9 mg                 | 64,28 | 1,8 mg                | 128,56 |
| Manganese          | 0,85 mg                | 42,5  | 1,7 mg                | 85     |
| Vitamin B6         | 0,50 mg                | 35,71 | 1 mg                  | 71,42  |
| Vitamin A          | 240 µg RE (800 IU)     | 30    | 480 µg RE (1600 IU)   | 60     |
| Folic Acid         | 150 µg                 | 75    | 300 µg                | 150    |
| Iodine             | 70 µg                  | 46,67 | 140 µg                | 93,34  |
| Chromium           | 60 µg                  | 150   | 120 µg                | 300    |
| Selenium           | 50 µg                  | 90,9  | 100 µg                | 181,8  |
| Molybdenum         | 35 µg                  | 70    | 70 µg                 | 140    |
| Vitamin K          | 30 µg                  | 40    | 60 µg                 | 80     |
| Biotin             | 15 µg                  | 30    | 30 µg                 | 60     |
| Vitamin D          | 10 µg (400,00 IU)      | 200   | 20 µg (800,00 IU)     | 400    |
| Vitamin B12        | 1,5 µg                 | 60    | 3 µg                  | 120    |

NRV: Nutritional Reference Value.

-: There is no Nutritional Reference Value.

## SMART 30 Tablets

- PHOSPHOTIDYLSERINE
- CHOLINE
- L-CARNITINE
- L-ARGININE
- MULTIVITAMIN
- MULTIMINERAL

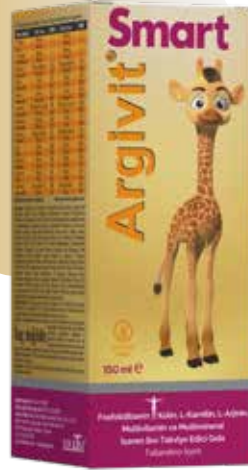
**CONTAINING FOOD SUPPLEMENT**

### Argivit<sup>®</sup> SMART TABLET

| Active Ingredients       | Amount in 1 Tablet    | NRV%  |
|--------------------------|-----------------------|-------|
| L-Arginine               | 200 mg                | -*    |
| Phosphotidylserine       | 200 mg                | -*    |
| Choline                  | 50 mg                 | -*    |
| L-Carnitine              | 50 mg                 | -*    |
| Vitamin C                | 50 mg (1000,00 IU)    | 62,5  |
| Phosphotidylinositol     | 25 mg                 | -*    |
| Phosphotidylcholine      | 25 mg                 | -*    |
| Phosphotidylethanolamine | 25 mg                 | -*    |
| Vitamin B3 (Niacin)      | 10 mg NE              | 62,5  |
| Zinc                     | 7,5 mg                | 75    |
| Iron                     | 5 mg                  | 35,7  |
| Vitamin B5               | 5 mg                  | 83,3  |
| Vitamin E                | 1,8 mg α-TE (2,45 IU) | 15    |
| Manganese                | 1 mg                  | 50    |
| Vitamin B1               | 1 mg (333,33 IU)      | 90,9  |
| Vitamin B6               | 1 mg                  | 71,4  |
| Vitamin B2               | 0,21 mg               | 15    |
| Vitamin A                | 500 µg RE (909,00 IU) | 62,5  |
| Folic acid               | 300 µg                | 150   |
| Chromium                 | 100 µg                | 250   |
| Selenium                 | 100 µg                | 181,8 |
| Molybdenum               | 100 µg                | 200   |
| Iodine                   | 75 µg                 | 50    |
| Vitamin K2               | 30 µg                 | 40    |
| Biotin                   | 30 µg                 | 60    |
| Vitamin D3               | 10 µg (400,00 IU)     | 200   |
| Vitamin B12              | 1,5 µg                | 60    |

NRV: Nutritional Reference Value.

-: There is no Nutritional Reference Value.



Natural Orange and  
Vanillin Flavored



**Usage:** It is recommended to consume 5 ml (1 scoop) once a day as a food supplement for children aged 4-10, and 10 ml (2 scoops) once a day as a food supplement for adults aged 11 and over. Shake before use. Do not exceed the recommended daily serving.

**Indication:** It contributes to improve cognitive functions and memory. It is recommended as a neuroprotective and supportive supplement in exam periods that require intense focus in children with attention deficit, in increasing the reflex response rate.



**Usage:** It is recommended to take 1 tablet once a day for adults over 11 years of age.

**Indication:** It is recommended for adults over 11 years of age, during exam periods that require intense focus, for children with attention deficit, to increase reflex response speed, as a neuroprotective support in dementia and Alzheimer's diseases.

# Argivit<sup>®</sup>



## IMMUN C 150 ml

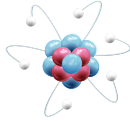
- QUERCETIN
- LACTOFERRIN
- BLACK ELDERBERRY EXTRACT
- GRAPE SEED EXTRACT
- SELENIUM
- ZINC
- VITAMIN C

### CONTAINING LIQUID FOOD SUPPLEMENT

#### Argivit<sup>®</sup> IMMUN C

| Ingredients              | In 5 ml | NRV%  |
|--------------------------|---------|-------|
| Black Elderberry Extract | 250 mg  | -*    |
| Vitamin C                | 250 mg  | 312,5 |
| Quercetin                | 50 mg   | -*    |
| Lactoferrin (Inferrin)   | 25 mg   | -*    |
| Grape Seed Extract       | 5 mg    | -*    |
| Zinc                     | 5 mg    | 50    |
| Selenium                 | 50 µg   | 90,9  |

-: There is no Nutritional Reference Value.  
NRV: Nutritional Reference Value.



Natural Mixed Fruit  
Flavored



**Usage:** It is recommended to consume 10 ml (2 spoons) once a day for adults over 11 years of age. Shake well before use.

**Indication:** It helps to improve immunity and to maintain healthy life. It is recommended for treatment support during the disease process and for prevention of infectious diseases.



## IMMUN C 30 Tablets

- QUERCETIN
- LACTOFERRIN
- BLACK ELDERBERRY EXTRACT
- GRAPE SEED EXTRACT
- SELENIUM
- ZINC
- VITAMIN C

### CONTAINING FOOD SUPPLEMENT

#### Argivit<sup>®</sup> IMMUN C TABLET

| Ingredients              | Each Tablet | NRV%   |
|--------------------------|-------------|--------|
| Black Elderberry Extract | 250 mg      | -*     |
| Vitamin C                | 250 mg      | 312,5  |
| Quercetin                | 50 mg       | -*     |
| Lactoferrin (Inferrin)   | 25 mg       | -*     |
| Grape Seed Extract       | 10 mg       | -*     |
| Zinc                     | 10 mg       | 100    |
| Selenium                 | 100 µg      | 181,82 |

-: There is no Nutritional Reference Value.  
NRV: Nutritional Reference Value.



**Usage:** It is recommended to take 1 tablet once a day for adults over 11 years of age.

**Indication:** It helps to improve immunity and to maintain healthy life. It is recommended for treatment support during the disease process and for prevention of infectious diseases.



**PROGEL** In its formula, with Progel technology  
Contains fortified Lactoferrin

# Argivit<sup>®</sup>

# Argivit Focus

## Child Health Product of the Year

We are at the top where our "FOCUS" is  
If Argivit is being preferred, there is 1 reason



## INFERRIN 30 Sachets

• LACTOFERRIN

CONTAINING  
FOOD SUPPLEMENT

### Argivit<sup>®</sup> Inferrin<sup>®</sup> Sachets

| Active Ingredients     | Each Sachet | NRV% |
|------------------------|-------------|------|
| Inferrin (Lactoferrin) | 100 mg      | -    |

\*: There is no Nutritional Reference Value

NRV: Nutritional Reference Value



**Usage:** For children aged 2-10 years and adults over 11 years of age, it is recommended to add 1 sachet into foods, beverages or consumed directly.

**Indication:** It can be used in iron deficiency anemia and prevention of the progression of infections in the initial period of allergic diseases, especially in viral infections in people with low immunity and acute gastroenteritis in children.

## INFERRIN 30 Capsule

• LACTOFERRIN

CONTAINING  
FOOD SUPPLEMENT

### Argivit<sup>®</sup> Inferrin<sup>®</sup> Capsule

| Active Ingredients     | Each Capsule | NRV% |
|------------------------|--------------|------|
| Inferrin (Lactoferrin) | 200 mg       | -    |

\*: There is no Nutritional Reference Value

NRV: Nutritional Reference Value



**Usage:** It is recommended to consume 1 capsule once a day for adults and over 11 years of age.

**Indication:** It can be used in iron deficiency anemia and prevention of the progression of infections in the initial period of allergic diseases, especially in viral infections in people with low immunity and acute gastroenteritis.

**PROGEL** In its formula, with Progel technology  
INDUSTRIAL SCALE MICROGELS Contains fortified Lactoferrin



# Argivit<sup>®</sup>

## DHA 10 ml Drops

- DHA
- PURE AND NATURAL FISH OIL

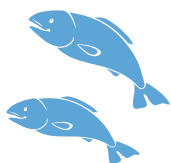
**CONTAINING  
FOOD SUPPLEMENT**

### Argivit<sup>®</sup> DHA Drops

| Active Ingredients  | Recommended Daily Intake  |                          |
|---|---------------------------|--------------------------|
|   | mg/10 drops<br>(0.625 ml) | mg/20 drops<br>(1.25 ml) |
| Fish oil with increased DHA concentration (High DHA concentration) in triglyceride form | 595,8                     | 1191,62                  |
| - DHA   | 416,63                    | 833,26                   |



## Triglyseride Form



**Usage:** For children aged 4-10, it is recommended to consume 10 drops (0.625 ml) once. For adults over 11 years of age, it is recommended to consume 20 drops (1.25 ml) once a day.

**Indication:** It is recommended to support the development of brain functions and development of eye functions.

## EPA 10 ml Drops

- EPA
- NATURAL AND PURE FISH OIL

**CONTAINING  
FOOD SUPPLEMENT**

### Argivit<sup>®</sup> EPA Drops

| Active Ingredients  | Recommended Daily Intake |                         |
|---|--------------------------|-------------------------|
|   | mg/5 drops<br>(0.3 ml)   | mg/10 drops<br>(0.6 ml) |
| Fish oil with increased EPA concentration (High EPA concentration) in triglyceride form | 291,42                   | 582,86                  |
| - EPA   | 241,70                   | 483,40                  |



## Triglyseride Form



**Usage:** For children aged 4-10, it is recommended to consume 5 drops (0.3 ml) once. For adults over 11 years of age, it is recommended to consume 10 drops (0.6 ml) once a day.

**Indication:** It is recommended to be used as a support for cardiovascular system and immunity. EPA has antiinflammatory effect.



# Argivit<sup>®</sup>

## WOMEN BRIGHT 30 Tablets

Gold Complex



- SAFR'INSIDE
- XTENERGY
- SKINAX<sup>2</sup>
- HYALURONIC ACID
- BIOTIN

CONTAINING  
FOOD SUPPLEMENT



### Argivit WOMAN Bright Tablets

| Active Ingredients | Each Tablet    | NRV%    |
|--------------------|----------------|---------|
| SkinAx2            | 150 mg         | -       |
| Grape seed extract | 114,7 mg       | -       |
| Melon extract      | 2,3 mg         | -       |
| Zinc               | 4 mg           | 40      |
| Vitamin C          | 12 mg          | 15      |
| Hyaluronic acid    | 50 mg          | -       |
| Safr's inside      | 30 mg          | -       |
| Saffron extract    | 18 mg          | -       |
| Vitamin B1         | 20 mg          | 1818,18 |
| Phosphotidylserine | 25 mg          | -       |
| Xtenergy           | 20 mg          | -       |
| Caffeine           | 12 mg          | -       |
| Vitamin B3         | 20 mg NE       | 125     |
| Vitamin B6         | 4 mg           | 285,71  |
| Vitamin D3         | 10 µg (400 IU) | 200     |
| Vitamin B2         | 3 mg           | 214,28  |
| Folic Acid         | 100 µg         | 50      |
| Biotin             | 60 µg          | 120     |
| Vitamin B12        | 1 µg           | 40      |

\*. There is no Nutritional Reference Value

NRV: Nutritional Reference Value

**Usage:** For adult women, it is recommended to take 1 tablet once a day.

**Indication:** It is recommended for energy and vitality all day long, stress, mood regulator, menstrual and menopausal symptom relief, collagen breakdown reduction effect on the skin, skin radiance enhancer and reduction in the appearance of skin spots.

skinax<sup>2</sup> safr'inside- qd Xtenergy

Safr'Inside™ is a registered trademark of Activ'Inside.

SkinAx™ is a registered trademark of Activ'Inside.

Xtenergy™ is a registered trademark of Omniactive.

## MAN BRIGHT 30 Tablets

Gold Complex



- SAFR'INSIDE
- XTENERGY
- P5P
- SAW PALMETTO
- L-ARGININE

CONTAINING  
FOOD SUPPLEMENT



### Argivit MAN Bright Tablets

| Active Ingredients   | Each Tablet    | NRV%   |
|----------------------|----------------|--------|
| Nettle extract       | 120 mg         | -      |
| Saw palmetto extract | 120 mg         | -      |
| Safr' inside         | 30 mg          | -      |
| Saffron extract      | 18 mg          | -      |
| Vitamin B1           | 20 mg          | 1818,1 |
| L-Arginine           | 25 mg          | -      |
| Xtenergy             | 20 mg          | -      |
| Caffeine             | 12 mg          | -      |
| Vitamin B3           | 20 mg NE       | 125    |
| Zinc                 | 5 mg           | 50     |
| Vitamin B6           | 4 mg           | 285,7  |
| Vitamin D3 (400 IU)  | 10 µg (400 IU) | 200    |
| Vitamin B2           | 3 mg           | 214,2  |
| Folic acid           | 100 µg         | 50     |
| Biotin               | 60 µg          | 120    |
| Vitamin B12          | 1 µg           | 40     |

\*. There is no Nutritional Reference Value

NRV: Nutritional Reference Value

**Usage:** For adult men, it is recommended to take 1 tablet per day.

**Indication:** It is recommended for stress, mood regulator, energy and vitality all day long. Prevention of losing hair and prostatic hyperlasia.

safr'inside- qd Xtenergy

SkinAx™ is a registered trademark of Activ'Inside.

Xtenergy™ is a registered trademark of Omniactive.



# Argivit®



# Argivit<sup>®</sup> Master FISH OIL CLASSIC

NEW  
PRODUCT



HIGH EPA VE DHA

 CETO3<sup>TM</sup>

OMEGA-3

Tutti Frutti Flavored  
Fish Oil



Not Medicine, it is a food supplement

# Argivit® 150 ml e

## Master

### FISH OIL CLASSIC

- LIQUID FOOD SUPPLEMENT CONTAINING HIGH EPA AND DHA

## CETO3™

### OMEGA-3

#### Tutti Frutti Flavored Fish Oil

### Argivit Master FISH OIL CLASSIC

| Active Ingredients         | 2,5 ml     | %NRV* | 5 ml       | %NRV* |
|----------------------------|------------|-------|------------|-------|
| Fish Oil Blend**           | 1500 mg    | -     | 3000 mg    | -     |
| Total Omega 3              | 860 mg     | -     | 1720 mg    | -     |
| -EPA                       | 435 mg     | -     | 870 mg     | -     |
| -DHA                       | 387,5 mg   | -     | 775 mg     | -     |
| Other Fatty Acids          | 350 mg     | -     | 700 mg     | -     |
| Flaxseed Oil               | 500 mg     | -     | 1000 mg    | -     |
| Medium Chain Triglycerides | 323 mg     | -     | 646 mg     | -     |
| Vitamin E                  | 15 mg α-TE | 125   | 30 mg α-TE | 250   |

-: There is no nutritional reference value.

\*NRV: Nutrition reference value



**Usage:** As a dietary supplement, it is recommended to consume 2.5 ml (half a scoop) per day for children aged 4-10, and 5 ml (1 scoop) per day for adults aged 11 and over.

**Indication:** DHA supports the development of brain functions and development of eye functions. EPA has antiinflammatory effect. EPA and DHA support cardiovascular system and immunity. CETO 3™ containing Cetoleic acid and Omega 11 stimulates the synthesis of EPA and DHA from ALA in human liver cells.

## Magnizinmore

- MAGNESIUM
- ZINC
- VITAMIN D

CONTAINING  
FOOD SUPPLEMENT

- BISGLICINATE
- CITRATE
- TAURATE
- MALATE

### Argivit Magnizinmore

Food Supplement Containing Magnesium, Zinc and Vitamin D

| Active Ingredients | 1 Tablet | %NRV* |
|--------------------|----------|-------|
| Magnesium**        | 160 mg   | 42,7  |
| Vitamin B6         | 10 mg    | 714,3 |
| Vitamin B1         | 10 mg    | 909   |
| Zinc               | 15 mg    | 150   |
| Vitamin D3         | 25 µg    | 500   |
| Vitamin B5         | 3 mg     | 50    |
| Manganese          | 1 mg     | 50    |
| Vitamin B12        | 4 µg     | 160   |

\*\* Elemental magnesium from Magnesium Taurate: 40 mg  
 Elemental magnesium from Magnesium Bisglycinate: 40 mg  
 Elemental magnesium from Magnesium Malate: 40 mg  
 Elemental magnesium from Magnesium Citrate: 40 mg

-: There is no nutritional reference value.

\*NRV: Nutrition reference value



**Usage:** It is recommended for adults aged 11 and over to consume 1 tablet a day as a food supplement.

**Indication:** It contributes to muscle and nervous functions, prevent chronic fatigue, insomnia and anxiety.



# Argivit®

# Argivit® 60 Tablets

## Bromelain

• BROMELAIN  
CONTAINING  
FOOD SUPPLEMENT

### Argivit BROMELAIN Tablet

| Ingredients | 1 Tablet | 2 Tablet | NRV%* |
|-------------|----------|----------|-------|
| Bromelain   | 500 mg   | 1000 mg  | -     |

-: There is no nutritional reference value.

\*NRV: Nutrition reference value



NEW PRODUCT



**Usage:** It is recommended for adults aged 11 and over to consume 2 tablets a day as a food supplement.

**Indication:** It contributes to support immunity system, regulate gastrointestinal system and has anti-edema effect.

# Prosante 60 Tablets

## BROMELAIN

CONTAINING  
FOOD SUPPLEMENT

### Argivit BROMELAIN Tablet

| Ingredients | 1 Tablet | 2 Tablet | NRV%* |
|-------------|----------|----------|-------|
| Bromelain   | 500 mg   | 1000 mg  | -     |

-: There is no nutritional reference value.

\*NRV: Nutrition reference value



NEW PRODUCT



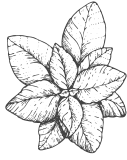
**Usage:** It is recommended for adults aged 11 and over to consume 2 tablets a day as a food supplement.

**Indication:** It contributes to support immunity system, regulate gastrointestinal system and has anti-edema effect.

# Argivit®

## TUSSI ADULT 150 ml

- PROPOLIS
- GINGER EXTRACT
- THYME EXTRACT
- RESVERATROL
- VITAMIN C
- ZINC



CONTAINING  
FOOD SUPPLEMENT

### Argivit<sup>®</sup> TUSSI

| Active Ingredients  | In 5 ml | NRV%  |
|---------------------|---------|-------|
| Propolis            | 91 mg   | -     |
| Ginger Extract      | 25 mg   | -     |
| Thyme Extract       | 16,5 mg | -     |
| Resveratrol         | 13,5 mg | -     |
| Cinnamon Extract    | 12,5 mg | -     |
| Willow Bark Extract | 12,5 mg | -     |
| Blackberry Extract  | 12,5 mg | -     |
| Peppermint Oil      | 8,5 mg  | -     |
| Eucalyptus Oil      | 8,5 mg  | -     |
| Vitamin C           | 8,5 mg  | 10,63 |
| Zinc                | 8,5 mg  | 85    |
| Turmeric Extract    | 3 mg    | -     |

\*: There is no Nutritional Reference Value  
NRV: Nutritional Reference Value



It is sweetened by  
Cypress Cone  
Molasses and Honey



**Usage:** For adults over 11 years of age, it is recommended to consume 5 ml (1 spoon) three (3) times a day, morning, noon and evening after meals. Shake well before use.

**Indication:** It has a natural antioxidant effect and is used as an immune booster and supplement. Menthol is used for its refreshing effect on the respiratory tract. It is used to soften the throat, reduce dry and moist coughs, strengthen immunity, mucolytic, expectorant functions. It is used in cases such as cough, fever and sore throat.

## TUSSI KIDS 150 ml

- PROPOLIS
- GINGER EXTRACT
- THYME EXTRACT
- GRAPE SEED EXTRACT
- VITAMIN C
- ZINC



CONTAINING  
FOOD SUPPLEMENT

### Argivit<sup>®</sup> TUSSI kids

| Active Ingredients  | In 5 ml | NRV%  |
|---------------------|---------|-------|
| Propolis            | 91 mg   | -     |
| Ginger Extract      | 25 mg   | -     |
| Thyme Extract       | 16,5 mg | -     |
| Grape Seed Extract  | 13,5 mg | -     |
| Willow Bark Extract | 12,5 mg | -     |
| Blackberry Extract  | 12,5 mg | -     |
| Cinnamon Extract    | 12,5 mg | -     |
| Peppermint Oil      | 8,5 mg  | -     |
| Eucalyptus Oil      | 8,5 mg  | -     |
| Vitamin C           | 8,5 mg  | 10,63 |
| Zinc                | 8,5 mg  | 85    |
| Turmeric Extract    | 3 mg    | -     |

\*: There is no Nutritional Reference Value  
NRV: Nutritional Reference Value



It is sweetened by  
Cypress Cone  
Molasses and Honey



**Usage:** For children aged 4-10, it is recommended to consume 5 ml (1 spoon) three (3) times a day, morning, noon and evening after meals. Shake well before use.

**Indication:** It has a natural antioxidant effect and is used as an immune booster and supplement. Menthol is used for its refreshing effect on the respiratory tract. It is used to soften the throat, reduce dry and moist coughs, strengthen immunity, mucolytic, expectorant functions. It is used in cases such as cough, fever and sore throat.

# Argivit<sup>®</sup>



4-10 year old children  
suitable for use.

## B12 Spray

VITAMIN B12  
SUPPORT

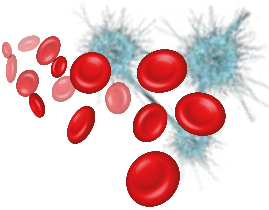
ACTIVE PLUS SPRAY

- METHYLCOBALAMIN
- HYDROXYCOBALAMIN
- ADENOSYLCOBALAMIN

CONTAINING  
FOOD SUPPLEMENT

### Argivit<sup>®</sup> B12 Active Plus Spray

| Active Substances   | Quantity 2 Puffs | NRV%   | Quantity 4 Puffs | NRV%   |
|---|------------------|--------|------------------|--------|
| Vitamin B12<br>(Methylcobalamin, Hydroxycobalamin and 5-Deoxyadenosylcobalamin) | 500 µg           | 20.000 | 1000 µg          | 40.000 |



## GINKGO KIDS & ADULT

- GINKGO BILOBA 30 ml Drops

CONTAINING  
FOOD SUPPLEMENT

### Argivit<sup>®</sup> Kids&Adult Drops

| Active Ingredients    | In 3 Drops | NRV% | In 10 Drops | NRV% |
|-----------------------|------------|------|-------------|------|
| Ginkgo biloba Extract | 103,2 mg   | -    | 344 mg      | -    |
| Phosphatidylcholine   | 37,8 mg    | -    | 126 mg      | -    |

\*: There is no Nutritional Reference Value

NRV: Nutritional Reference Value



**GINKGO**  
**KIDS&ADULT**  
DROPS

- Active forms
- Natural cobalamins
- Easy of use



**Usage:** It is recommended to use 1-2 puffs into the mouth for children aged 4-10 years, 2-4 puffs for adults over 11 years of age. Do not exceed the recommended daily serving.

**Indication:** It helps normal functions of the immune system and nervous system. It is necessary for energy metabolism. It helps prevent fatigue and exhaustion.



**Usage:** It is recommended to consume 3 drops for children aged 4-10 years, 10 drops for adults over 11 years of age. It can be used to drip into 1 glass (200 ml) of water.

**Indication:** It can be used to improve cognitive functions, support memory and attention. It has antioxidant properties and neuroprotective effect. It contributes to regulate blood circulation.

**Argivit<sup>®</sup>**

## GUMMY 15 Jellies

- L-ARGININE
  - MULTIVITAMINS
- CHEWABLE SUPPLEMENTS**

### Argivit<sup>®</sup> GUMMY

| Active Ingredients | Each Jelly      | NRV%  |
|--------------------|-----------------|-------|
| L-Arginine         | 25 mg           | -     |
| Vitamin C          | 12,5 mg         | 16,63 |
| Phosphatidylserine | 10 mg           | -     |
| Zinc               | 2,5 mg          | 25    |
| Vitamin B3         | 5 mg NE         | 31,25 |
| Vitamin B5         | 2 mg NE         | 33,33 |
| Vitamin E          | 1,8 mg α-TE     | 15    |
| Vitamin B1         | 0,5 mg          | 45,45 |
| Vitamin B2         | 0,45 mg         | 32,14 |
| Vitamin B6         | 0,25 mg         | 17,85 |
| Vitamin D3         | 2,5 µg (100 IU) | 50    |
| Vitamin 12         | 0,75 µg         | 30    |

\*: There is no Nutritional Reference Value

NRV: Nutritional Reference Value

**GUMMY**  
Vitamins & Minerals

Natural Orange  
Flavored



**Usage:** For children age 4-10 years, 1 jelly each morning - noon - evening (three pcs per day). For adults over 11 years of age and adults, it is recommended to consume 2 jellies each morning - noon - evening ( 6 pcs per day) by chewing.

**Indication:** It contributes to healthy growth and development, support for school success, focus, intelligence development and mental clarity.

## EFFERVESCENT C 10 Tablets

- VITAMIN C
- ZINC
- VITAMIN D<sub>3</sub>
- VITAMIN K<sub>2</sub> (Menaquinone7)

**CONTAINING  
FOOD SUPPLEMENT**

### Argivit<sup>®</sup> EFFERVESCENT C

| Active Ingredients                    | Each Effervescent | NRV%  |
|---------------------------------------|-------------------|-------|
| Vitamin C                             | 1000 mg           | 1250  |
| Zinc                                  | 15 mg             | 150   |
| Vitamin D <sub>3</sub>                | 25 µg (1000 IU)   | 500   |
| Vitamin K <sub>2</sub> (Menaquinone7) | 10 µg             | 33,33 |

\*: There is no Nutritional Reference Value

NRV: Nutritional Reference Value



**Usage:** 1 Effervescent tablet per day for adults over 11 years of age, It is used by dissolving in 200 mL water.

**Indication:** It is recommended to use daily vitamin support, immunity support during the infectious disease process and for prevention before the disease.

**C Zn D K<sub>2</sub>**  
QUADRUPLE EFFECT



**Argivit<sup>®</sup>**

## VISUSAFE 30 Tablets

### Eye Complex

- LUTEIN
- ZEAXANTHIN
- SAFFRON
- RESVERATROL
- MULTIVITAMIN
- MULTIMINERAL



**CONTAINING  
FOOD SUPPLEMENT**



**Usage:** For adults, it is recommended to consume 1 tablet a day with water.

**Indication:** You can safely choose it in your AMD patients who are already receiving injection therapy, in patients with one eye dry type and one eye wet type and in high-risk patients who are likely to switch from dry to wet type.

### Argivit<sup>®</sup> visusofe Tablets

| Active Ingredients | Amount         | NRV%   |
|--------------------|----------------|--------|
| Vitamin C          | 120 mg         | 150    |
| Resveratrol        | 120 mg         | **     |
| Vitamin E          | 60 mg α-TE     | 499,92 |
| Ginkgo Biloba      | 60 mg          | **     |
| Saffron            | 20 mg          | **     |
| Lutein             | 15 mg          | **     |
| Zinc               | 15 mg          | 150    |
| Vitamin B1         | 10 mg          | 909,09 |
| Vitamin B6         | 10 mg          | 714,28 |
| Zeaxanthin         | 4 mg           | **     |
| Copper             | 1 mg           | 100    |
| Vitamin B12        | 0.5 mg         | 0,02   |
| Chromium           | 0.2 mg         | 500    |
| Vitamin B9         | 0.1 mg         | 50     |
| Selenium           | 0.05 mg        | 90,91  |
| Vitamin D3         | 10 µg (400 IU) | 200    |

\*: There is no Nutritional Reference Value  
NRV: Nutritional Reference Value

## BLEPHIX<sup>®</sup>

### 30 PIECE WIPES

- WITH TEA TREE OIL
- TAURINE CONTAINS

- No Irritating
- Moisturizing and nourishing
- Gentle deep cleansing

#### Directions for Use:

Wash your hands before each use. Gently wipe the eyelid until all makeup, dirt, oil and residue is removed. Then repeat on the other eye. Each wipe is used for one eyelid and eyelashes. Use a new tissue for the other eye. It helps to remove sebum, dust, germs and all other make-up.



# Argivit<sup>®</sup>

## BLEPHIX®

50 ml SHAMPOO

- WITH TEA TREE OIL
- TAURINE CONTAINS

### Directions for Use:

Wash hands before each use. Shake well before use, apply a small amount of shampoo on the brush by using the foaming pump. Apply the shampoo to the lashes and around the eye area to remove make up and oil residue. Using gentle movements rub up and down along the lashes. Rinse thoroughly with water. Suitable for daily use to clean extensions. Helps remover sebum, dust, germs and all other makeup.



## BLEPHIX®

100 ml FOAM SHAMPOO

- WITH TEA TREE OIL
- TAURINE CONTAINS

### Directions for Use:

Wash your hands before each use. Gently wipe the eyelid until all makeup, dirt, oil and residue is removed. Then repeat on the other eye. Each wipe is used for one eyelid and eyelashes. Use a new tissue for the other eye. It helps to remove sebum, dust, germs and all other make-up.



Argivit®



# Argivit<sup>®</sup> Beauty

Radiant Skin  
Healthy Hair & Nail Support  
Healthy Joint Support

Coming  
Soon



# Betamega®

## MEGA POWER



Natural Raspberry  
Flavored

## Betamega 150 ml

- BETAGLUCAN
- PROPOLIS EXTRACT
- VITAMIN C
- SELENIUM

CONTAINING LIQUID  
FOOD SUPPLEMENT

### Betamega®

| Active Ingredients       | In 5 ml | NRV% |
|--------------------------|---------|------|
| Black Elderberry Extract | 100 mg  | -    |
| Vitamin C                | 80 mg   | 100  |
| Betaglucan, 1,3 - 1,6    | 50 mg   | -    |
| Pure Propolis Extract    | 20 mg   | -    |
| Grape Seed Extract       | 20 mg   | -    |
| Zinc                     | 5 mg    | 50   |
| Selenium                 | 50 µg   | 90,9 |

\*: There is no Nutritional Reference Value  
NRV: Nutritional Reference Value



**Usage:** It is recommended to consume 5 ml (1 scoop) once a day as a food supplement for children aged 4-10, and 10 ml (2 scoops) once a day as a food supplement for adults aged 11 and over. Shake before use. Do not exceed the recommended daily serving.

**Indication:** It contributes to support immunity system.

## Betamega 30 Tablet

- BETAGLUCAN
- PROPOLIS EXTRACT
- VITAMIN C
- SELENIUM

CONTAINING  
FOOD SUPPLEMENT

### Betamega® Tablets

| Active Ingredients       | Each Tablet | NRV% |
|--------------------------|-------------|------|
| Vitamin C                | 120 mg      | 150  |
| Beta Glucan 1,3-1,6      | 100 mg      | -    |
| Propolis Extract         | 100 mg      | -    |
| Black Elderberry Extract | 100 mg      | -    |
| Grape Seed Extract       | 20 mg       | -    |
| Zinc                     | 15 mg       | 150  |
| Selenium                 | 50 µg       | 90,9 |

\*: There is no Nutritional Reference Value  
NRV: Nutritional Reference Value



**Usage:** It is recommended to consume 1 tablet once a day for adults over 11 years of age.

**Indication:** It contributes to support immunity system.



# MEGA POWER

## Betamega®

## Betamega Tussi 100 ml

- THYME
- GINGER
- TURMERIC (CURCUMIN)
- CINNAMON

**CONTAINING LIQUID  
FOOD SUPPLEMENT**

### Betamega®

| Active Ingredients | In 5 ml | NRV% |
|--------------------|---------|------|
| Ginger Powder      | 100 mg  | -    |
| Thyme Extract      | 100 mg  | -    |
| Cinnamon Extract   | 50 mg   | -    |
| Grape Seed Extract | 15 mg   | -    |
| Curcumin           | 12.5 mg | -    |

\*: There is no Nutritional Reference Value

NRV: Nutritional Reference Value

Natural Vanillin  
Flavored



**Usage:** It is recommended to consume 5 ml (1 scoop) once a day as a food supplement for children aged 4-10, and 10 ml (2 scoops) once a day as a food supplement for adults aged 11 and over. Shake before use. Do not exceed the recommended daily serving.

**Indication:** It contributes to support immunity system. It is used to reduce coughs.

## Betamega 12 Pastilles

- BLACK ELDERBERRY
- BETAGLUCAN
- PROPOLIS
- VITAMIN C

**CONTAINING  
FOOD SUPPLEMENT**

### Betamega® Pastilles

| Active Ingredients       | Each (1 Lozenge) | NRV% |
|--------------------------|------------------|------|
| Vitamin C                | 30 mg            | 37.5 |
| Beta Glucan 1,3-1,6      | 20 mg            | -    |
| Black Elderberry Extract | 7,25 mg          | -    |
| Pure Propolis            | 4,37 mg          | -    |

\*: There is no Nutritional Reference Value

NRV: Nutritional Reference Value



**Usage:** 2-6 lozenges can be used by sucking in the mouth slowly for adults aged 11 and older.

**Indication:** It contributes to support immunity system. It is used to reduce coughs. It is used to reduce sore throat.



**Betamega®**

Natural Tutti Frutti  
Flavored

## Probiotic Prebiotic 10 Sachets

- PROBIOTIC  
MICROORGANISMS
- PREBIOTIC

CONTAINING  
FOOD SUPPLEMENT

### Ageflor<sup>®</sup> Sachets

| Active Ingredients         | 2 Sachets                |
|----------------------------|--------------------------|
| Probiotic Mikroorganisms   | 10 x 10 <sup>9</sup> cfu |
| -Lactobacillus acidophilus | 5 x 10 <sup>9</sup> cfu  |
| -Lactobacillus rhamnosus   | 5 x 10 <sup>9</sup> cfu  |
| Prebiotic / Inulin         | 200 mg                   |

cfu: Colony forming unit



**Usage:** It is recommended to use 1 sachet a day for children aged 4-10 years, 2 sachets a day for adults over 11 years of age. It can be mixed into some water or yogurt.

## Friend of Your Immunity and Digestive System

**Indication:** It supports immunity and digestive system. It is used for treatment of acute gastroenteritis and prevention of antibiotics related diarrhea.

## Probiotic Prebiotic 10 Capsules

- PROBIOTIC  
MICROORGANISMS
- PREBIOTIC

CONTAINING  
FOOD SUPPLEMENT

### Ageflor<sup>®</sup> Capsule

| Active Ingredients         | 2 Capsules               |
|----------------------------|--------------------------|
| Probiotic Mikroorganisms   | 10 x 10 <sup>9</sup> cfu |
| -Lactobacillus acidophilus | 5 x 10 <sup>9</sup> cfu  |
| -Lactobacillus rhamnosus   | 5 x 10 <sup>9</sup> cfu  |
| Prebiotic / Inulin         | 200 mg                   |

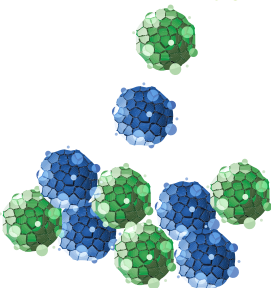
cfu: Colony forming unit



**Usage:** It is recommended to use 2 capsules for adults over 11 years of age.

**Indication:** It supports immunity and digestive system. It is used for treatment of acute gastroenteritis and prevention of antibiotics related diarrhea.

Lactobacillus rhamnosus GG is recommended to use  
for treatment of acute gastroenteritis and prevention of antibiotics related  
diarrhea in the ESPGHAN guideline.



# Ageflor<sup>®</sup>

## Fish Oil 150 ml

- OMEGA 3
- EPA
- DHA

CONTAINING LIQUID  
FOOD SUPPLEMENT

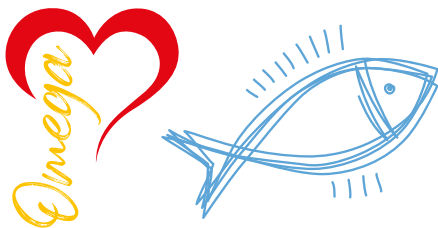
### Fullomega® Syrup

| Active Ingredients | In 10 ml |
|--------------------|----------|
| Fish oil           | 2350 mg  |
| Omega 3            | 705 mg   |
| -EPA               | 376 mg   |
| -DHA               | 235 mg   |



**Usage:** It is recommended to consume 5 ml (1 spoon) once a day for children aged 4-10 and adults over 11 years of age.

**Indication:** DHA supports the development of brain functions and development of eye functions. EPA has antiinflammatory effect. EPA and DHA support cardiovascular system and immunity.



## Fish Oil 30 Softgels

- OMEGA 3
- EPA
- DHA

CONTAINING  
FOOD SUPPLEMENT

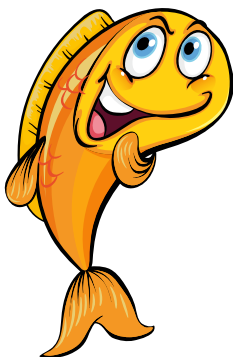
### Fullomega® Softgel

| Active Ingredients | 1 Softgel |
|--------------------|-----------|
| Fish oil           | 1000 mg   |
| Omega 3            | 300 mg    |
| -EPA               | 180 mg    |
| -DHA               | 120 mg    |



**Usage:** It is recommended to use 2 softgels for adults over 11 years of age.

**Indication:** DHA supports the development of brain functions and development of eye functions. EPA has antiinflammatory effect. EPA and DHA support cardiovascular system and immunity.



# Fullomega®

# Preflat® 30 Capsules

- AMYLASE
- LIPASE
- PROTEASE
- PROBIOTIC

**CONTAINING  
FOOD SUPPLEMENT**

## Preflat® Capsule

| Active Ingredients              | Each Capsule          |
|---------------------------------|-----------------------|
| Amylase (100,000 SKB/g)         | 110 mg                |
| Protease (25,000 HUT/g)         | 60 mg                 |
| Lipase (40,000 FIP)             | 20 mg                 |
| Lactobacillus acidophilus La-14 | 1x10 <sup>9</sup> cfu |

cfu: Colony forming unit

100%  
Vegan



**Usage:** It is recommended to use 3 capsule for adults over 11 years of age.

# Tetrazinc® 20 ml Drops

- VITAMINS
- ZINC

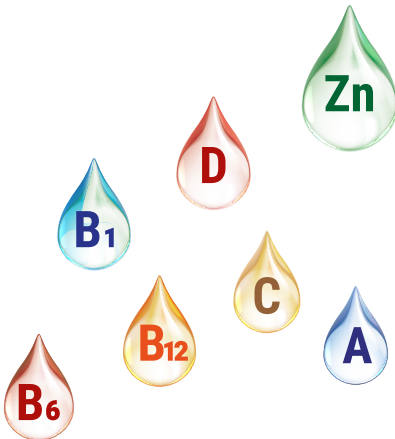
**CONTAINING LIQUID  
FOOD SUPPLEMENT**

## Tetrazinc® Drops

| Active Ingredients | in 5 drops     | NRV%  |
|--------------------|----------------|-------|
| Vitamin C          | 15 mg          | 18,75 |
| Zinc               | 1 mg           | 10    |
| Vitamin B1         | 0,2 mg         | 18,18 |
| Vitamin B6         | 0,11 mg        | 7,86  |
| Vitamin A          | 240 µg RE      | 30    |
| Vitamin D          | 10 µg (400 IU) | 200   |
| Vitamin B12        | 0,4 µg         | 16    |

\*: There is no Nutritional Reference Value

NRV: Nutritional Reference Value



**Usage:** 5 drops are recommended once a day for children aged 4-10

**B  
COMPLEX**



# Prosante<sup>BEAUTY</sup> BLUELIGHT

PROSANTE BLUELIGHT  
Pro-ageing Blue Light Krem  
Yüksek Koruma İçerikli Bakım Kremi



Our products with nanotechnology take skin care one step further and completely eliminate the boundaries between health and beauty! The products we develop completely transform the understanding of beauty and health by integrating the power of nanotechnology into skin care and dermatological treatments. We achieve much faster and more effective results than traditional formulations by penetrating the active ingredients deeper into the skin. By crossing the skin barrier, we provide higher bioavailability and offer targeted treatments. While we achieve revolutionary success in areas such as anti-aging, spot treatment and wound healing, our cosmetic products also meet our users with long-lasting and effective results.

- ✓ **INNOVATION AT ANY AGE!**
- ✓ **REVITALIZED SKIN,  
POWERED BY ADVANCED  
FORMULAS!**
- ✓ **REJUVENATE AT THE  
CELLULAR LEVEL  
WITH EVERY TOUCH!**



SPF  
30





**Prosante** BEAUTY  
ULTRAKOLAJEN  
Serum

- ✓ **STAY YOUNG,  
SHIELD SKIN!**
- ✓ **SCIENTIFICALLY  
ENHANCED GLOW!**
- ✓ **OPTIMIZED GLOW,  
CLINICALLY PROVEN  
SKIN HEALTH!**





## Prosante® ULTRART 60 Tablets

- GLUCOSAMINE SULFATE
- CHONDROITIN SULFATE
- BOSWELLIA EXTRACT
- MSM
- TYPE II COLLAGEN

**CONTAINING  
FOOD SUPPLEMENT**



**Usage:** It is recommended to use 2 tablets for adults over 11 years of age.



## Prosante® Tablets

| Active Ingredients        | 2 Tablets |
|---------------------------|-----------|
| Glucosamine Sulfate 2 HCL | 1000 mg   |
| Chondroitin Sulfate       | 200 mg    |
| Boswellia Extract         | 150 mg    |
| MSM                       | 150 mg    |
| Type II Collagen          | 10 mg     |

\*. There is no Nutritional Reference Value

NRV: Nutritional Reference Value




## Prosante® ULTRACOLLAGEN 30 ml LIQUID VIAL

- HYDROLYZED COLLAGEN
- GLUCOSAMINE SULFATE
- CHONDROITIN SULFATE
- MSM
- TYPE II COLLAGEN
- HYALURONIC ACID
- COENZYME Q10
- L-CARNITINE
- VITAMINS
- MINERALS

**CONTAINING LIQUID  
FOOD SUPPLEMENT**



**Usage:** It is recommended to use 30 ml once a day for adults over 18 years of age.



## Prosante®

| Active Ingredients   | In 30ml        | NRV% |
|----------------------|----------------|------|
| Hydrolyzed Collagen  | 5000 mg        | -    |
| Glucosamine Sulphate | 1200 mg        | -    |
| MSM                  | 750 mg         | -    |
| Chondroitin Sulphate | 600 mg         | -    |
| Vitamin C            | 500 mg         | 625  |
| Hyaluronic Acid      | 200 mg         | -    |
| L-Carnitine          | 100 mg         | -    |
| Type II Collagen     | 20 mg          | -    |
| Coenzym Q10          | 15 mg          | -    |
| Zinc                 | 10 mg          | 100  |
| Vitamin E            | 10 mg          | 83   |
| Vitamin B5           | 6 mg           | 100  |
| Vitamin B6           | 200 µg         | -    |
| Biotin               | 1000 µg        | 2000 |
| Selenium             | 75 µg          | 136  |
| Vitamin D            | 10 µg (400 IU) | 2000 |

\*. There is no Nutritional Reference Value

NRV: Nutritional Reference Value





## Prosante® EFFERVESCENT 20 Tablets

- VITAMIN C
- ZINC

**CONTAINING  
FOOD SUPPLEMENT**



| Prosante®          |                         | Effervescent |
|--------------------|-------------------------|--------------|
| Active Ingredients | Amount (1 Effervescent) | NRV%         |
| Vitamin C          | 1000 mg                 | 1500         |
| Zinc               | 10 mg                   | 100          |

\*: There is no Nutritional Reference Value  
NRV: Nutritional Reference Value



**Usage:** 1 Effervescent tablet per day for adults 11 years and older It is used by dissolving in 200 mL water.

# C Vitamin and Zinc



## Prosante® EFFERVESCENT 20 Tablets

- BLACK ELDERBERRY
- VITAMIN C
- ZINC

**CONTAINING  
FOOD SUPPLEMENT**



| Prosante®          |                         | Effervescent |
|--------------------|-------------------------|--------------|
| Active Ingredients | Amount (1 Effervescent) | NRV%         |
| Black Elderberry   | 160 mg                  | -            |
| Vitamin C          | 80 mg                   | 100          |
| Zinc               | 7,5 mg                  | 75           |

\*: There is no Nutritional Reference Value  
NRV: Nutritional Reference Value



**Usage:** 1 Effervescent tablet per day for adults 11 years and older It is used by dissolving in 200 mL water.

# SAMBUCUS



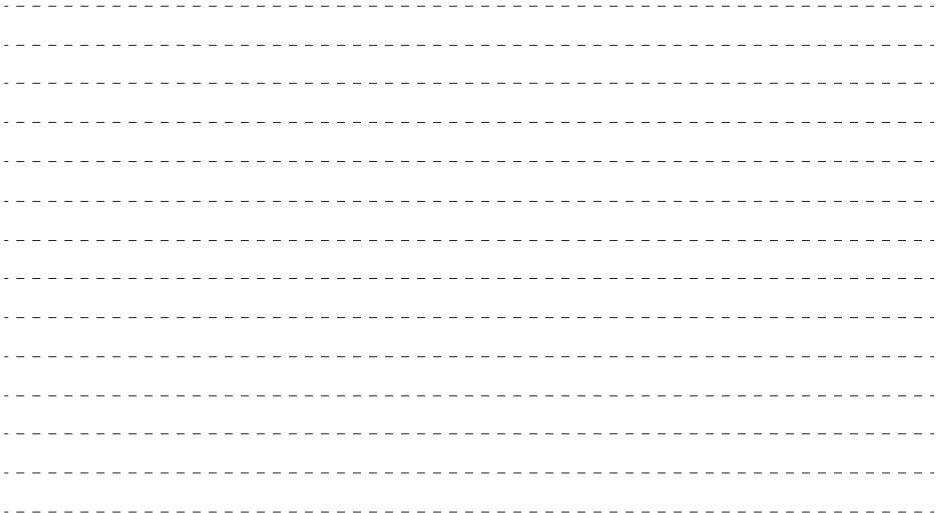
# Doctor Do.

## Snack Bars

Coming  
Soon



Fruit Bar, Vegetable Bars, Protein Bar,  
High Protein Bar, Protein Bar with Collagen,  
Granola Bar Kids Fruit Bar







**Hekim İlaç Medikal Kozmetik San. Tic. Ltd. Şti.**

Office: Madenler, İlke Sk. No:1,  
34776 Ümraniye-İstanbul-İstanbul-Türkiye

Factory: Battalgazi Mh. Meryemana Sk.  
F/24 No:1 Aytop Gıda Sanayi 34935  
Sultanbeyli-İstanbul-Türkiye  
P: +90 216 640 02 01  
info@hekimilac.com

[www.hekimilac.com](http://www.hekimilac.com)